

Texas Termites

Family Kalotermitidae

Scientific name: *Incisitermes minor*

Common name: western drywood termite



Alate: Note dark body, smoky wings, head and thorax reddish brown. (Photo T.H. Atkinson)



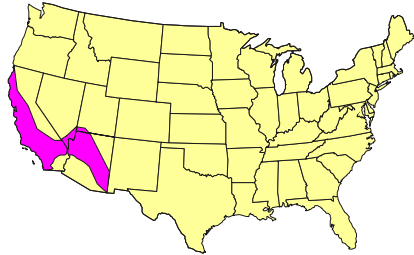
Primary queen and king. Note black abdomen reddish brown head and thorax. Abdomen of queen appears striped due to swelling and exposure of intersegmental membranes. (Photo R. Scheffrahn, Univ. Of Florida).



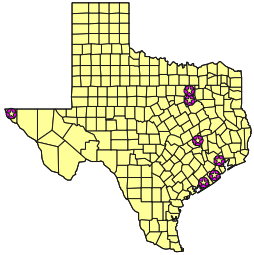
Wing. Note smoky color. (Photo. R. Scheffrahn, Univ. of Florida)



Soldier head, dorsal and lateral views. Note 3rd antennal segment elongated (Photo R. Scheffrahn, Univ. Of Florida).



The western drywood termite is found naturally in California and parts of Nevada, Arizona and Utah (Weesner, 1965). It has been transported to other parts of the southern U.S. And has been collected in numerous Texas localities (Howell, Granovsky & Hamman, 1987)



Texas Termites

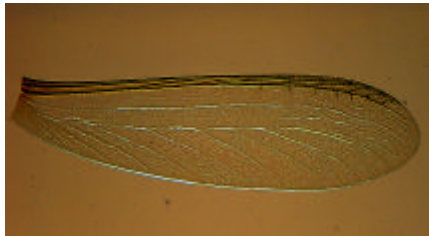
Family Kalotermitidae

Scientific name: *Incisitermes snyderi*

Common name: Gulf Coast drywood termite



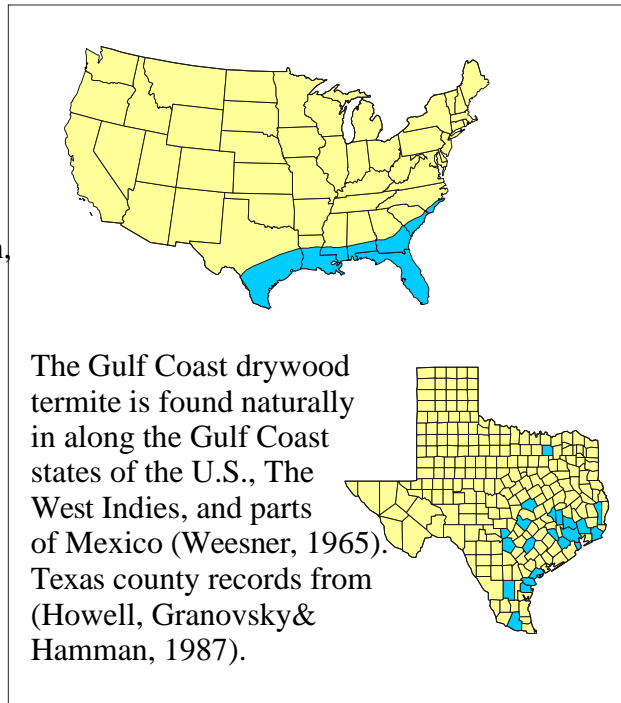
Alates of *Cryptotermes brevis* (top) and *Incisitermes snyderi* (bottom). *I. snyderi* alates have a light brown body and the wings have a yellowish-brown tinge. *C. Brevis* alates have a blackish body and blackish wings. (Photo R. Scheffrahn, Univ. Of Florida)



Wing. Note faint brownish color. (Photo. R. Scheffrahn, Univ. of Florida)



Soldier head, dorsal and lateral views. Note 3rd antennal segment is not elongated (Photo R. Scheffrahn, Univ. Of Florida).



The Gulf Coast drywood termite is found naturally in along the Gulf Coast states of the U.S., The West Indies, and parts of Mexico (Weesner, 1965). Texas county records from (Howell, Granovsky & Hamman, 1987).

Texas Termites

Family Kalotermitidae

Scientific name: *Cryptotermes brevis*

Common name: West Indian powderpost termite



Alates of *Cryptotermes brevis* have a blackish body and blackish wings.
(Photo R. Scheffrahn, Univ. Of Florida)



Wing. Note blackish color.
(Photo. R. Scheffrahn, Univ. of Florida)



Soldier head, dorsal and lateral views. Head forms “plug” for guarding entrance to tunnels.
(Photo R. Scheffrahn, Univ. Of Florida).

Distribution: The West Indian powderpost termite is widely distributed in tropical and subtropical areas of the world. Typically it is only found in structures, not in natural settings. It is commonly found in furniture and frequently transported to new localities.